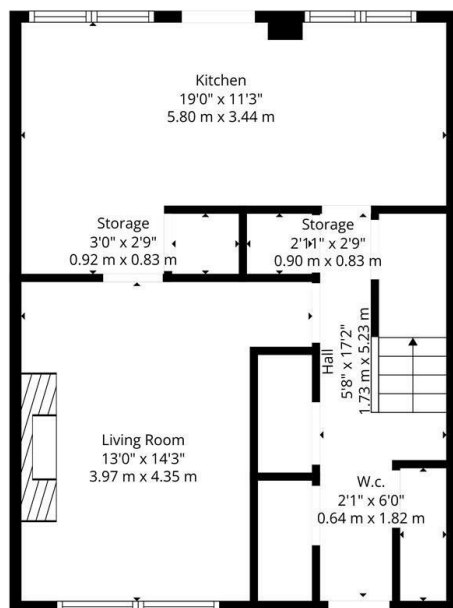




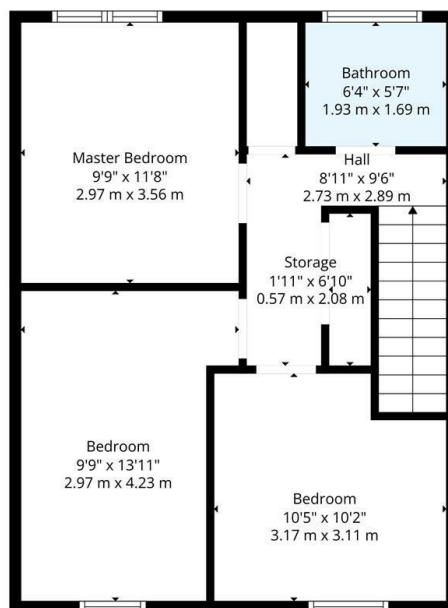
4 Torgyle Street, Glasgow, G23 5HR

Offers Over £185,000

- Spacious mid terrace villa
- Excellent storage throughout
- Modern wc with two-piece suite
- Modern Kitchen Diner
- Enclosed front and rear garden
- EER Band C
- Modern family bathroom
- Three double sized bedrooms



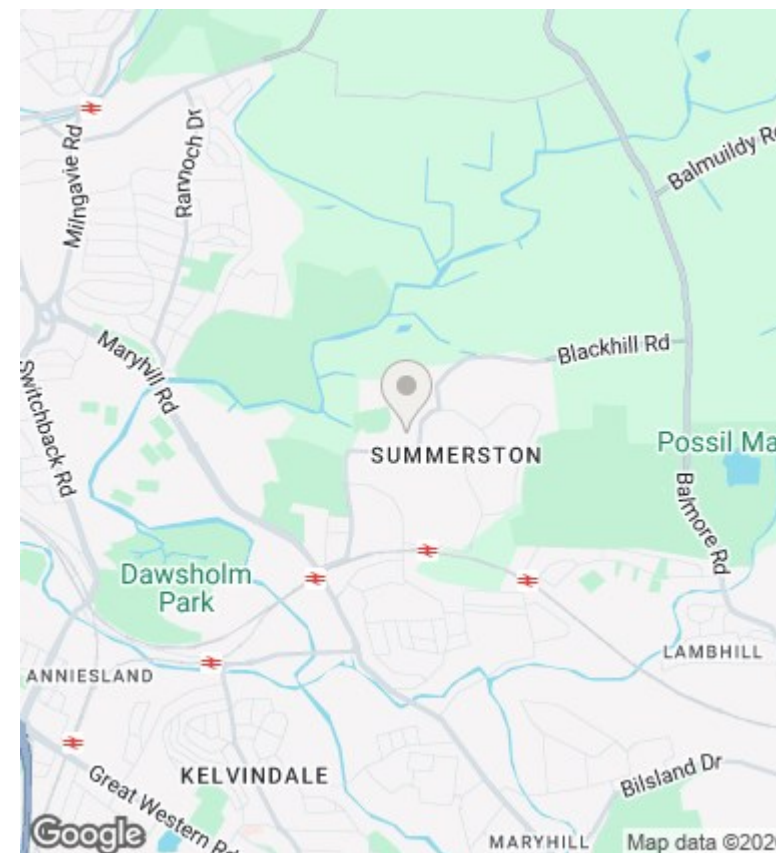
Floor 1



Floor 2



TOTAL: 944 sq. ft, 88 m²
 FLOOR 1: 464 sq. ft, 43 m², FLOOR 2: 480 sq. ft, 45 m²
 EXCLUDED AREAS: W.C.: 12 sq. ft, 1 m², STORAGE: 30 sq. ft, 3 m², WALLS: 92 sq. ft, 9 m²
Floor Plan Created By Cubicasa App. Measurements Deemed Highly Reliable But Not Guaranteed.



Directions

Viewings

Viewings by arrangement only. Call 01417262111 to make an appointment.

Council Tax Band

EPC Rating:

C

Energy Efficiency Rating		
	Current	Potential
Very energy efficient - lower running costs		
(92 plus) A		
(81-91) B		
(69-80) C	74	79
(55-68) D		
(39-54) E		
(21-38) F		
(1-20) G		
Not energy efficient - higher running costs		
Scotland	EU Directive 2002/91/EC	